

# *Brizo Yachts SC*

## *Sport Cruiser Open*



# *Brizo Yachts SC*

## *Sport Cruiser Open*



# *Brizo Yachts SC*

## *Sport Cruiser Open*



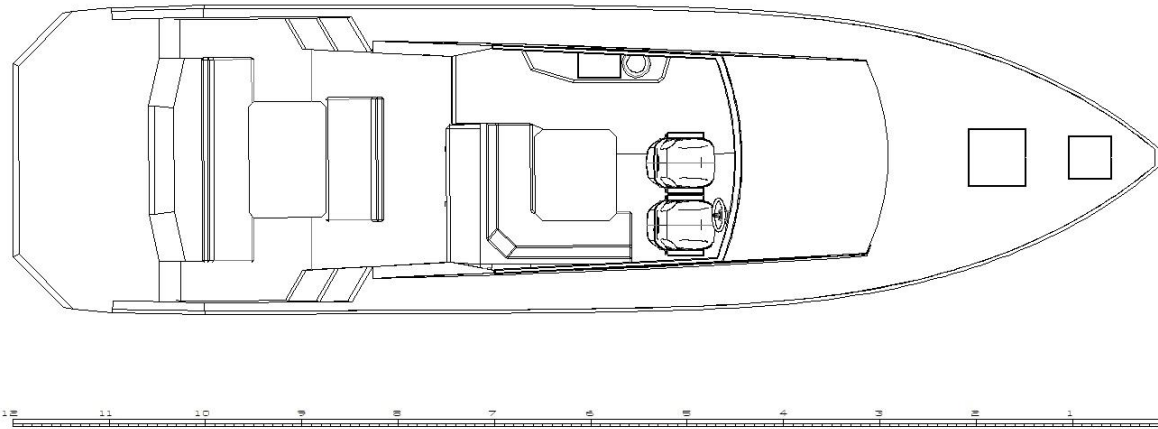
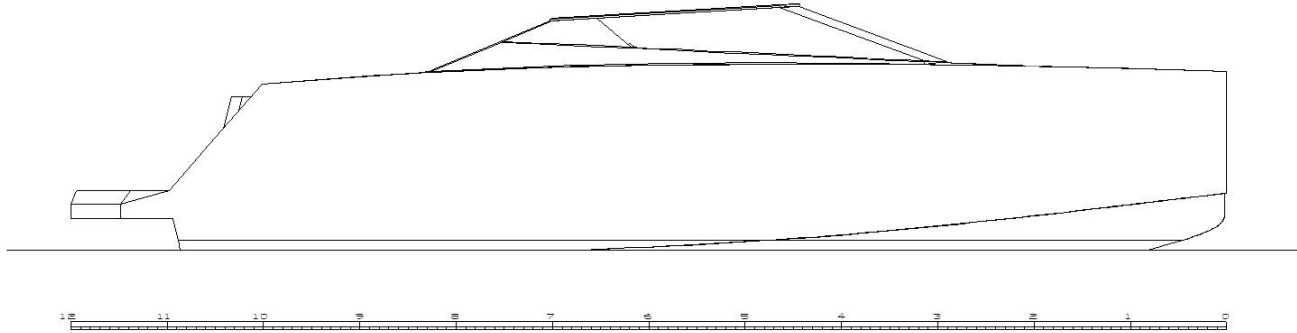
# *Brizo Yachts SC*

## *Sport Cruiser Open*



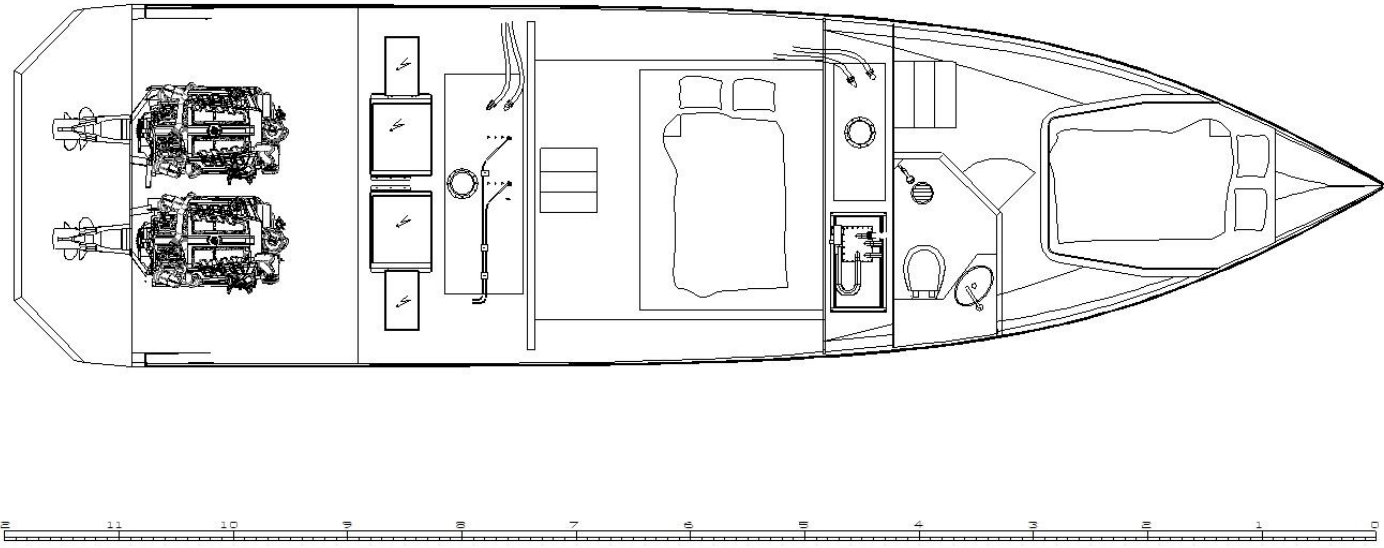
# *Brizo Yachts SC*

## *Sport Cruiser Open*



# *Brizo Yachts SC*

## *Sport Cruiser Open*



# Brizo Yachts SC

## Sport Cruiser Open

### Technical specification Brizo Yachts 40 SC Open

Length 11,9m

Beam 3,2m

DW approx. 10t

Fuel Capacity 1000l

Fresh Water Capacity 120l - 330l

Waste water Capacity 120 l

### Engine Alternatives

2 x Volvo Penta D6-370 740 hp Volvo Penta DPH Stern Drive

2 x Volvo Penta D6-400 800 hp Volvo Penta DPH Stern Drive

Volvo Penta Joystick steering system

2 x Yanmar 8LV-320 640 hp Yanmar ZT370 Stern Drive

2 x Yanmar 8LV-370 740 hp Yanmar ZT370 Stern Drive

2 x Cummins QSB6.7 550 1100 hp Hamilton Waterjet HJ-322 Blue Arrow

2 x Volvo Penta D6-400 800 hp Hamilton Waterjet HJ-322 Blue Arrow

**Waterjets and sterndrives with joystick please ask for more details**



# Brizo Yachts SC

## Sport Cruiser Open

### Standard equipments

#### Hull and Swim Platform

Bollards 6 pcs, Flush design  
Ladder, integrated in the bathing platform  
Bottom colour, two coats of primer included  
Bench on aft deck, lockable box  
Anchor locker in the Bow  
Brizo design Flag pole Stainless steel  
Steplights, 8 pcs, LED color white  
Hull isolated from condensation  
Optional colour of Hull and Superstructure, free of choice from AWL Grip color chart except metal colors

#### Steering cabin and front cabin, interior

Laminate panel interior  
Stainless steel window frames  
Stainless steel cupholders  
LED Interior lighting in the ceiling  
Reading lamp in the mid cabin, LED  
Reading lamp in the front cabin, LED  
Teak table, adjustable by height  
Saloon sofa  
Laminate floor

#### Cabin and roof, exterior

Air ventilators in the ceiling, 2 pcs, (lower deck SB and PS)  
One Skylight in the front cabin, lowered, flush design  
Stainless steel cupholders  
Logo with lighting, 2 pcs LED  
Glued windows, tinted  
Stainless steel signal horn

#### WC, equipment

Teak door, lockable  
Washstand, Stainless steel, with hand shower  
Pressurized water system  
Septic tank, 120l  
No-smell filter (septic tank)  
Mirror  
Head, electric flushing  
Lighting, LED  
Skylight for ventilation





# Brizo Yachts SC

## Sport Cruiser Open

### Helm, equipment

Brizo design leather covered instrument panel with integrated chart plotter Garmin 12"  
Isotta leather adjustable steering-wheel from collection

Stainless steel windscreen wiper 3 pcs (rainsensors as extra equipment)  
Magnet compass with light

Defroster heater from the engine 10,4 kW  
7" screen Radio/CD/MP3/Ipod, 2 loudspeakers and FM antenna  
Power central, automatic fuses with lights  
Remote controlled main switch(es)  
Tank monitoring (Fuel, water, septic)  
Battery monitoring  
Stainless steel cupholders

### Security, mooring etc.

Fist aid kit  
Boathook  
Fenders, 8 pcs with cover  
Mooring ropes (2x10m+2x6m)  
Manual bilge pump in the engine room  
Hand fire extinguisher, 2 kg,  
Automatic bilge pump x2  
Lopolight Nav lights

### Galley, equipment

Optional layout and placing  
Cooker with double hot plate, diesel

Washing-up sink, Stainless steel  
Pressurized water system

Refrigerator 50 l, Stainless steel  
Teak cupboard and storage boxes  
Storage under galley  
Water heater, 40 l engine heated (driven with shore power)

### Engine room

Engine hatches 2 pcs with gassprings  
LED lightning in engine room  
Fire extinguisher in engine room with indicator



*Brizo Yachts SC*

*Sport Cruiser Open*

***Brizo Yachts***

Mestarintie 25

06150 Porvoo

Finland

[www.brizoyachts.fi](http://www.brizoyachts.fi)

